

Crescent

textured flagstones

DEPTHS



40
Millimetres

FINISH

Tex

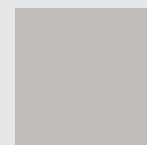
Textured



400 x
400mm



450 x
450mm



600 x
600mm

Crescent
colours

COLOURS

For 'Stock Information' on colours availability - see page 3.



NATURAL GREY



CHARCOAL



BUFF



Frost
Resistant



Pedestrian
Use



Abrasion
Resistant



Crescent

textured flagstones

DEPTHS



40
Millimetres

FINISH

Tex

Textured



400 x
400mm



450 x
450mm



600 x
600mm

STANDARDS + PERFORMANCE

Product Type
Manufactured to
Surface Layer
Efflorescence

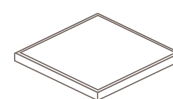
Functional flagstones with a textured finish
hEN 1339:2003
Durable and hard wearing with a minimum surface layer of 8mm
State-of-the-art factory controlled vapour curing significantly
reduces this naturally occurring chemical reaction
>3.5Mpa Class 1
(USRV) >75 extremely low potential for slip.
Specific slip / skid resistance test results are available
on request from our Technical Specification Department
BS 7533-4:2006
Q25 315

Bending Strength
Slip / Skid Resistance

Installed to
NBS Plus

EDGES

Crescent is supplied with a nominal
5mm wide x 3mm deep straight
chamfer edge as standard.



Straight Chamfer



Frost
Resistant



Pedestrian
Use



Abrasion
Resistant

SUSTAINABILITY

Energy Use
Water Used
Recyclable
Manufacturing
Non-Primary Materials
Waste Wood + Plastic
BREEAM

100% renewable
100% recycled water
100% of this product can be recycled
Produced in the UK using responsibly sourced materials
52 – 60% (surface layer)
100% recycled
A Rating – according to the Green Guide
to Specification 4th edition 2009. A+ Rating can be achieved
when used in conjunction with a prepared recycled sub-base

SPACER NIBS

No formed spacer.

FINISHES

Textured finish.

AG RECOMMENDATIONS

Close Jointing

AG recommends a close joint of between 2mm - 5mm
as per BS 7533 to cater for product alignment (butt
jointing should be avoided).

Jointing Sand

AG recommends that Natural Grey and Charcoal
coloured products are jointed with AG's Granite Sand.

Colour blending

AG recommends that products are blended from 3
packs from alternate sides using full vertical sections.

Please contact our Technical Specification
Department for further details.

ADVICE + GUIDANCE

For advice and guidance on ordering,
installation, good site practice, etc.
visit our website:
www.ag.uk.com/advice+guidance

For maintenance guidance and health
and safety advice visit our website:
www.ag.uk.com/maintenance

SPECIFICATION REFERENCE: NBS PLUS: Q25 SLAB/BRICK/SETT/COBBLE PAVINGS: 31, 315; hEN: 1339:2003

Crescent

textured flagstones

DEPTHS



40
Millimetres

FINISH

Tex

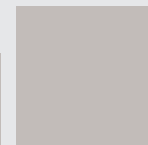
Textured



400 x
400mm



450 x
450mm



600 x
600mm

Crescent
stock information



Frost
Resistant



Pedestrian
Use



Abrasion
Resistant

STOCK INFORMATION

| Standard product depth | Size (mm) | In Stock | Available Colours | m ² per pack | Units per m ² | Units per pack | Unit weight (kg) | Weight per pack (t) | Packs per 8 wheeler (Ireland) | Packs per unit lorry (GB/Ireland) |
|------------------------|-----------|----------|--------------------------------|-------------------------|--------------------------|----------------|------------------|---------------------|-------------------------------|-----------------------------------|
| 40mm | 600 x 600 | Yes | Natural Grey / Charcoal / Buff | 9 | 2.77 | 25 | 36 | 0.9 | 15 | GB 29 / IRE 24 |
| | 450 x 450 | Yes | Natural Grey / Charcoal / Buff | 15.8 | 4.94 | 78 | 19.2 | 1.503 | 10 | GB 18 / IRE 17 |
| | 400 x 400 | Yes | Natural Grey / Charcoal / Buff | 16 | 6.25 | 100 | 16.09 | 1.609 | 10 | GB 17 / IRE 16 |

Information for a specific colour / depth is available on request from our Technical Specification Department.

MANUFACTURING

Crescent flags are manufactured from quality aggregates. PLANT OF MANUFACTURE: 600x600mm and 400x400mm are made at our Fivemiletown production plant. 450x450mm are made at our Toome production plant.

CERTIFICATION

ISO 9001
ISO 14001
ISO 45001
CE Marking

Quality Management.
Environmental Management.
Occupational Health and Safety Management.
Download our Declaration of Performance (DOP) data at: www.ag.uk.com/resources